



Skill Evaluations

Help employees discover personalized courses tailored to their proficiency level with private self-evaluations.

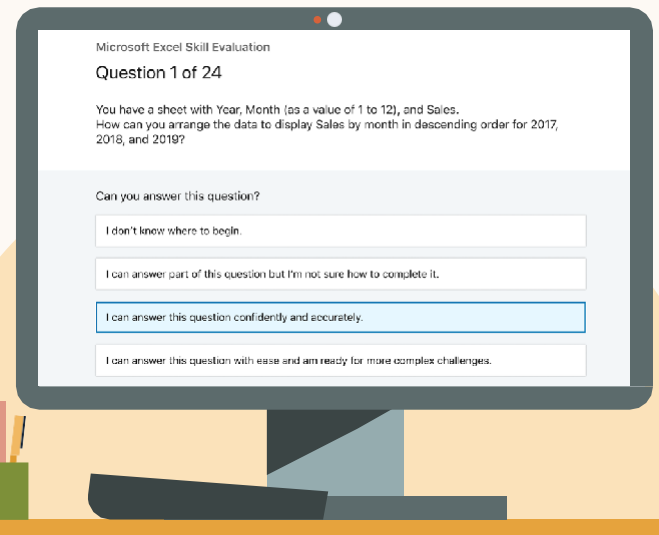
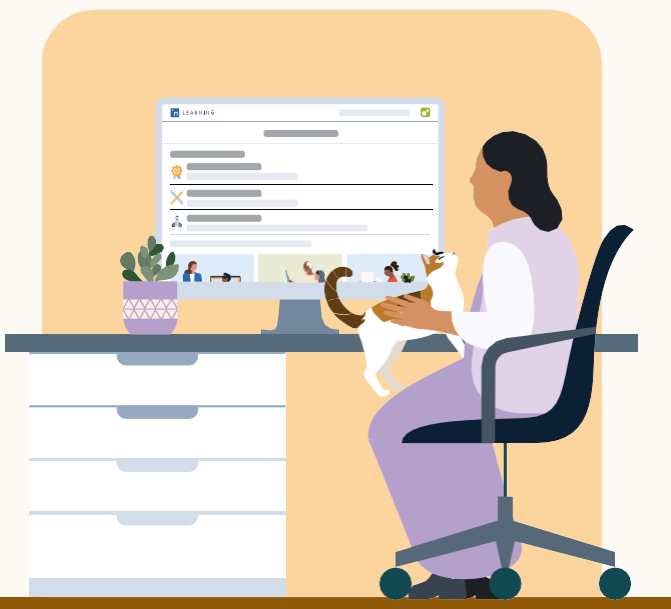


Detailed insights

Employees can understand their proficiency level for various topics within a skill by taking a guided self-evaluation.

Actionable recommendations

Employees can start learning from several courses that are at the right difficulty level for them.



Employee-driven development

Employees can guide their own learning journey by completing or retaking Skill Evaluations at any time. Individual results are kept private.

Powered by data and insights

Subject matter experts create Skill Evaluations based on industry research and skills data from the world's largest professional network.

42 English Skill Evaluations will be available for LinkedIn Learning Hub users in January 2023.

For more information, please contact your LinkedIn Learning account team.